

YOUR PARTNER IN EXCELLENCE



A modern office interior with large windows overlooking a city. The room features a black leather armchair, a black leather sofa, a black metal coffee table, and a black floor lamp. The floor is highly reflective, showing the furniture and the view outside. The overall color scheme is blue and black.

BASEL II PILLAR III AND BASEL III DISCLOSURES 31 DECEMBER 2024



Report of factual findings to the Board of Directors of Ahli Bank SAOG (the ‘Bank’ or the “Engaging Party”) in respect of Basel II - Pillar III Disclosures and Basel III related disclosures

Purpose of the Agreed Upon Procedures Report and Restriction on Use and Distribution

Our report is solely for the purpose of assisting **Ahli Bank SAOG** (the Bank) in reporting factual findings to the Board of Directors of the Bank in respect of the disclosure requirements set out by the Central Bank of Oman via Circular No. BM 1009 dated 13 September 2006 and BM 1027 dated 4 December 2007 issued by Central Bank of Oman (“CBO”) and Basel II - Pillar III Disclosures and Basel III related disclosures and may not be suitable for another purpose.

The report is intended solely for the **Ahli Bank SAOG** (the “Engaging Party”) and Board of Directors of the Bank and should not be used by, or distributed to, any other parties except to CBO. Our report is not to be used for any other purpose, recited or referred to in any document, copied or made available (in whole or in part) to any other person without our prior written express consent. We accept no duty, responsibility or liability to any other party in connection with the report or this agreed upon procedures engagement. This report relates only to the matters specified below and does not extend to any financial statements of the Bank taken as a whole.

Responsibility of the Engaging Party

The Engaging Party has acknowledged that the agreed upon procedures are appropriate for the purpose of the engagement. The Bank is responsible for the subject matter on which the agreed upon procedures are performed.

Practitioner’s Responsibilities

We have conducted the agreed upon procedures engagement in accordance with the International Standard on Related Services 4400 (Revised), Agreed Upon Procedures Engagements. An agreed upon procedures engagement involves performing the procedures that have been agreed with the Engaging Party, and reporting the findings, which are the factual results of the agreed upon procedures performed. We make no representation regarding the appropriateness of the agreed upon procedures.

This agreed upon procedures engagement is not an assurance engagement. Accordingly, we do not express an opinion or an assurance conclusion. Had we performed additional procedures, other matters might have come to our attention that would have been reported.

Professional Ethics and Quality Control

We have complied with the ethical requirements of the International Ethics Standards Board for Accountants’ *International Code of Ethics for Professional Accountants (including International Independence Standards)* (“*IESBA Code*”) and the independence requirements in accordance with local laws.

Our firm applies International Standard on Quality Management (“ISQM”) 1, *Quality Management for Firms that Perform Audits or Reviews of Financial Statements, or Other Assurance or Related Services Engagements*, and accordingly, maintains a comprehensive system of quality control including documented policies and procedures regarding compliance with ethical requirements, professional standards and applicable legal and regulatory requirements.

Procedures and Findings

We have performed the procedures enumerated in Appendix I which are included in BM 1027 dated 4 December 2007 issued by Central Bank of Oman (“CBO”) and which were agreed upon with the Engaging Party in terms of the engagement dated 16 April 2024.

You have acknowledged that the agreed upon procedures are appropriate for the purpose of the engagement.

This report is based on the information provided to us by the management of the Engaging Party. We did not subject the information contained in our report or given to us by management to checking or verification procedures except to the extent expressly stated above. This is normal practice when carrying out such limited scope procedures, but contrasts significantly with, for example, an audit. The procedures we performed were not designed to and are not likely to reveal fraud.

Deloitte & Touche

Deloitte & Touche (M.E.) & Co. LLC
Muscat, Sultanate of Oman
4 March 2025



Appendix I

S. no.	Procedures	Findings
1	Checked that the Disclosure includes a summary on the terms and conditions of the main features of all capital instruments as of and for the year ended 31 December 2024 (the "Summary"). Checked completeness of this information by tracing the capital instruments as disclosed in the audited financial statements to the Report.	No exceptions noted.
2	Traced the individual items shown as Tier 1 capital to the audited financial statements as of and for the year ended 31 December 2024. Checked that the following items are separately disclosed in the calculation: <ol style="list-style-type: none"> a. paid-up share capital/common stock b. reserves c. minority interests in the equity of subsidiaries (if any) d. innovative instruments e. other capital instruments f. regulatory calculation differences deducted from Tier 1 capital g. other items <p>Further, checked that the following items have been deducted from the Tier 1 capital:</p> <ol style="list-style-type: none"> a. goodwill; b. deferred taxation; c. investments 	No exceptions noted.
3	Checked the mathematical accuracy of the information provided for different Tiers of capital. Moreover, inspected that the limits prescribed for various capital elements are not breached	No exceptions noted.
4	Agreed to the bank's audited financial statements as of and for the year ended 31 December 2024 the gross balances and the net balances of the following items as shown in the calculation table of the capital adequacy ratios: <ol style="list-style-type: none"> a. on balance sheet items; b. off-balance sheet items; c. derivative financial instruments. 	No exceptions noted.
5	Checked that the risk weights assigned by management to Claims on Banks, Sovereigns, domestic Public Sector Entities; and Claims on Securities firms etc. are in accordance with BM 1009.	No exceptions noted.
6	Checked the mathematical accuracy of the summary disclosure prepared by the Bank.	No exceptions noted.
7	Inspected the summary of total Tier 1 capital, Tier 2 capital and Tier 3 capital including other deductions and total eligible capital for any possible omission as required by BM 1009.	No exceptions noted.

Appendix I (continued)

S. no.	Procedures	Findings
8	Agreed the balances for the components disclosed in the summary to the audited financial statements and bank records.	No exceptions noted.
9	Checked whether any content of the Disclosures are <ol style="list-style-type: none">internally inconsistent with other parts of the Disclosuresin respect of narrative items, inconsistent with numerical data in the Disclosuresinconsistent with the audited financial statements of the bank	No exceptions noted.

BASEL II PILLAR III AND BASEL III Disclosures

31 December 2024

1. INTRODUCTION

This report represents the Basel II Pillar III and Basel III qualitative and quantitative disclosures, highlighting the capital adequacy, risk profile and control process of ahlibank SAOG (“the Bank”) as per the requirements of CBO. The disclosures are intended to complement the Pillar I, minimum capital requirements and Pillar II, supervisory review process of the framework. They should be read in conjunction with the financial statements as of 31st December 2024.

The Bank has a formal “Disclosure Policy” for disclosure of information that it makes available to the general public as well as to the regulatory bodies. This policy is framed to enhance transparency about its activities and promote good governance. The Bank makes information publicly available in accordance with its policy on disclosure of information and applicable regulations.

2. SCOPE

The Bank prepares this report in accordance with the Basel Accord in conjunction with and as per the directive of the Central Bank of Oman (CBO).

The Scope of application covers the Bank only and is not part of any group either as a member or as top corporate entity in the group. The figures presented in this report are included with the Islamic window of the Bank and results of the Islamic window are prepared separately.

3. CAPITAL STRUCTURE

The capital base for complying with regulatory purposes differs from accounting capital. The Bank’s regulatory capital is classified into two categories- Tier I and Tier II capital.

Tier 1 capital is composed of core capital and is further classified into Common Equity Tier 1 capital (‘CET1’) and Additional Tier 1 capital (‘AT1’). CET1 includes paid up capital, legal reserves and retained earnings reduced by cumulative unrealized losses on FVOCI investments and any other applicable deduction specified in the Basel III Capital Accord. AT1 capital consists of subordinated capital instruments.

Tier II capital consists of revaluation reserves/ cumulative fair value gain or losses on Fair value through other comprehensive income (FVOCI) instruments, Stage 1 and Stage 2 expected credit loss allowance as allowed by CBO.

There is no innovative or complex capital instrument in the capital structure of the Bank.

CAPITAL MANAGEMENT

The primary objective of the Bank’s Capital management framework is to ensure stability by maintaining adequate amount of high-quality capital to commensurate its risk profile. Healthy levels of capital, support the Bank in attaining strong credit rating and maximizing shareholders value. The framework ensures compliance with regulatory capital requirements set by CBO.

The Bank has following credit ratings at present:

Capital Intelligence

Foreign currency Long Term Rating: **BB+**

Foreign currency Short term; **B**

Outlook: **Positive**

Fitch Rating

Long term foreign currency and local currency IDRs; **BB**

Short term foreign currency and local currency IDRs; **B**

Viability rating; **bb-**

Outlook: **Positive**

The process of assessing the capital requirements of the Bank commences with the compilation of the annual business plan by individual business units, which are then consolidated into the annual budget plan of the Bank. The annual budget plan provides an estimate of the overall growth in assets, its impact on capital and targeted profitability.

Strategic business objectives and future capital needs are assessed within this framework. Normally, the Bank employs capital rationing techniques to allocate capital for each of the Bank’s business risk departments in order to optimize returns.

BASEL II PILLAR III AND BASEL III Disclosures

31 December 2024

3. CAPITAL STRUCTURE (continued)

Sources of future capital are identified and plans put in place to raise and retain capital, under the terms of the framework. The Bank also manages its capital structure and adjusts it in the light of changes in economic conditions and the risk characteristics of its activities. In order to maintain or adjust the capital structure, the Bank may adjust the amount of dividend payment to shareholders or issue capital to shareholders or issue capital securities.

The Bank's Finance department monitors and reports the planned versus actual position, to ensure that the Bank is always adequately capitalized. Risk weighted assets and capital are monitored by the Risk Management department also periodically to assess the quantum of capital available to support assets growth and optimally deploy capital to achieve targeted returns.

The Bank's capital structure as at 31 December 2024, based on the CBO guidelines is as follows:

Sl.No	Elements of Capital	Amount (RO'000)
Tier I Capital		
1	Share capital*	244,966
2	Legal reserves	48,024
3	Retained earnings*	52,210
Common Equity Tier I before deductions		345,200
Deductions:		
4	Cumulative unrealized losses and intangibles recognized directly in equity	(11,110)
Common Equity Tier 1		334,090
Additional Tier I Capital		
	Tier 1 perpetual subordinated bonds	179,366
Tier I capital after all deductions		513,456
Tier II Capital		
5	Revaluation reserves / cumulative fair value gains on FVOCI Instruments	640
6	Stage 1 & Stage 2 expected credit losses	7,112
Total Tier II Capital		7,752
Total Regulatory Capital		521,208

*The Board of Directors have recommended dividend of 10 baizas per share (5 baizas per share as cash dividend and 5 baizas per share in the form of mandatory convertible bonds) which is subject to approval of the shareholders at the ensuing Annual General Meeting and the regulatory authorities

CAPITAL ADEQUACY

Qualitative disclosures

The Bank's capital management framework sets out to define, measure, raise and deploy capital in a coordinated and consistent manner. Its objective is to maximize its return on capital and, at the same time, provide an adequate cushion to cover any unexpected losses. The Bank manages its capital in an integrated manner with the aim of maintaining strong capital ratios and high ratings. This calls for a balanced approach: maintaining capital levels that are sufficient to provide a high return to shareholders; meeting the requirements of regulators, rating agencies and other stakeholders (including deposit holders and senior creditors), and supporting future business growth. The cost of capital and its composition in terms of its quality and stability is also considered.

The capital management process of Islamic window is aligned with the strategic planning process of the Bank. Capital planning is carried out in conjunction with the strategic business and financial planning exercise. Bank maintains a five-year rolling strategic plan which is updated and reviewed by the Board of Directors on an annual basis. Capital requirements are assessed based on projected business plans and budget. The Bank uses a prudential building-block approach as the measurement technique to assess capital adequacy for current and future activities, which is compared with the consolidated eligible capital.

BASEL II PILLAR III AND BASEL III Disclosures

31 December 2024

3. CAPITAL STRUCTURE (continued)

The Bank's total capital adequacy ratio is 15.38% as against the CBO prescribed minimum requirement of 13.5% (including capital conservation buffer of 2.50%) as at 31 December 2024. The Bank follows a capital adequacy framework to link the Bank's annual budget projections and the capital required to achieve business objectives. It is determined by the Bank's strategic planning objectives and capital planning framework. Capital requirements are assessed for credit, operational and market, risks. In order to calculate the capital adequacy ratio, the Bank follows the standardized approach forming part of the Pillar 1 requirements of Basel II Norms and adopts rating from CBO's recognized four External Credit Assessment Institutions (ECAI), namely Moody's, S&P Global, Fitch Ratings and Capital Intelligence, for calculating the risk on its sovereign and bank exposures. In order to equip the requirements of the advanced approaches, the Bank has already implemented obligor rating models and the ratings are being tracked regularly.

In order to meet with Pillar 2 requirements of Basel II Norms, the Bank has in place Internal Capital Adequacy Assessment Process (ICAAP) for assessing the Bank's capital adequacy in relation to various risks such as interest rate risk, liquidity risk, concentration risk etc., as well as a strategy for maintaining the capital adequacy level. Based on the guidelines issued by Central Bank of Oman, assessment under ICAAP has been completed for the years from 2024-2027 and it has been determined that the Bank is adequately capitalized to undertake its planned business activities.

ICAAP process is divided into a base case and stressed scenarios. The Bank has assumed three different kinds of stress scenarios, namely Mild, Medium and Severe. These stress scenarios differ in terms of stress event impact level (Mild being the lowest and Severe being the highest).

The following stress scenarios are applied:

- Rise in impairment provision as a % of loans and advances
- Portion of SME sector performing loans become NPLs
- Decline in prices of the Bank's portfolio of FVOCI investments
- Appreciation / depreciation of local currency against all other currencies
- Withdrawal of customer deposits
- Decline in liquid assets
- Shift in yield curve
- Increase in cost of funding due to reputational risk
- Branch generated less than expected profitability
- Consolidated impact of different scenarios

Quantitative disclosures

i) Position of various risk weighted assets is presented as under (RO '000):

As on 31 December 2024

Sl. No	Details	Gross balances (book value)	Net balances (book value)	Risk weighted assets
1	On-balance sheet items	3,565,314	3,382,829	2,917,294
2	Off-balance sheet items	110,238	110,238	105,416
3	Derivatives	3,772	3,772	1,698
4	Market risk	-	-	189,824
5	Operational Risk	-	-	174,724
	Total			3,388,956
6	Tier 1 capital			513,456
7	Tier 2 capital			7,752
8	Total Regulatory Capital			521,208
8.1	Capital requirement for credit risk			408,295
8.2	Capital requirement for market risk			25,626
8.3	Capital requirement for operational risk			23,588
	Total required capital			457,509
9	CET 1 ratio			9.86%
10	Tier 1 ratio			15.15%
11	Total capital ratio			15.38%

BASEL II PILLAR III AND BASEL III Disclosures

31 December 2024

3. CAPITAL STRUCTURE (continued)

ii) Capital adequacy

As on 31 December 2024

Sl. No	Details	Simple Approach
		Amount in RO 000's
1	Tier I capital (after supervisory deductions)	513,456
2	Tier II capital (after supervisory deductions and up to eligible limits)	7,752
3	Risk weighted assets – banking book	3,024,407
4	Risk weighted assets – operational risk	174,724
5	Total Risk Weighted Assets – Banking Book + Operational Risk	3,199,131
6	Minimum required capital to support RWAs of banking book and operational risk	431,883
	i) Minimum required Tier I capital for banking book and operational risk	367,900
	ii) Tier II capital required for banking book and operational risk	63,983
7	Tier I capital available for supporting trading book	89,326
8	Tier II capital available for supporting trading book	-
9	Risk Weighted Assets – trading book	189,824
10	Total capital required to support trading book	25,626
11	Minimum Tier I capital required for supporting trading book	7,303
12	Total Regulatory Capital	521,208
13	Total Risk Weighted Assets – Whole bank	3,388,956
14	BIS Capital Adequacy Ratio	15.38%

In order to smoothen the higher volatility in ECL computation and its impact on regulatory capital of the banks, CBO has issued a requirement to apply a “prudential filter” approach on IFRS 9 expected credit loss (ECL) provisions on calculating the regulatory capital. Any increase in the Stage 2 provisioning compared to December 31, 2019 will be added back to regulatory capital while these provisions will be gradually phased-out during a five-year period ending 31 December 2024.

Besides, the bank has also applied in its capital adequacy calculations the “Prudential filter” under interim adjustment arrangement for Stage-1 and Stage-2 ECL, as mentioned above. The impact of above filter on the bank’s regulatory capital is 10 bps. As at the reporting date the capital position of the Bank remains strong and is well placed to absorb the impact of any economic environment.

4. Risk Exposure and Assessment

Risk Management Principles

Risk is an inherent part of the Bank’s business activities. The primary goal of risk management is to ensure that the Bank’s asset and liability profile, its trading positions, and its credit and operational activities do not expose it to losses that could threaten its survival. Risk Management assists in ensuring that risk exposures do not become excessive, relative to the Bank’s capital and financial positions. The Bank has already in place a risk appetite statement set by the Board.

The Bank manages the risks effectively and efficiently by making risk management an integral part of commercial banking business. This emphasizes a clear understanding of business requirements in terms of products, clients, delivery capabilities, competition, regulatory environment, shareholder values and the global economic environment leading the Bank to identifying the various associated risks.

Having identified the risks, the Risk Management Department formulate policies and procedures taking into account regulatory requirements and best international practices, so as to monitor and control the risks within pre-determined acceptable limits.

Primary responsibility for the management of risk lies with the business and operational areas responsible for the generation of risk exposure. Risk management provides an in-depth check against risk decisions and an ongoing platform to evaluate, monitor and sanction risk at the individual transaction and overall portfolio level.

Risk Management Structure

The Bank’s risk management department reports directly to the Executive Risk Committee (a Board Committee).

BASEL II PILLAR III AND BASEL III Disclosures

31 December 2024

4. Risk Exposure and Assessment (continued)

The Bank's Risk Management includes the following four elements:



Risk framework

The Bank has set up policies and measures to assess capital adequacy in terms of CBO regulations, which have been approved by the Board of Directors. Under these, the Bank assesses its capital against its risk profile, to ensure its capital is sufficient to support all material risks to which it is exposed.

The Board of Directors ensures that the senior management establishes a framework that identifies, measures, monitors and reports all relevant significant risks. The risk management department has identified material risks that the Bank is exposed to, and has defined the framework necessary to measure, monitor, and report these risks on a timely basis.

The following Board and Management committees manage and control material risks to the Bank:

Board Committees:

- Audit and Compliance Committee
- Executive and Credit Committee
- Executive Risk Committee
- Nomination and Remuneration Committee
- Digital Transformation Committee

Management Committees:

- Executive Management Committee
- Credit and Investment Committee
- Credit Risk Management Committee
- Special Assets Committee
- Assets and Liabilities Committee
- Operational Risk Committee
- Products and Consumer Protection Committee
- Technology and Digital Transformation Committee
- Technology Delivery Committee

The Bank's risk management is based on a 'Three Lines of Defense' model and is also supported by the fourth line of defense, to shield the Bank against risks that might threaten the achievement of its goals. This structure allows for a coordination of control responsibilities in an effective and efficient manner. To reach this objective, roles and responsibilities are clearly communicated to all the functions so that everyone understand his/ her role and how it relates to the activities of other functions. Roles and responsibilities are communicated to the employees through policies and procedures and also through job descriptions. The following line of defenses are explained below:

First line of Defense

The business operations side which is the first line of defense is fully responsible for all the risks in its area of activity and has to ensure that effective controls are in place. In so doing, it ensures that the right controls are performed in the right way, self-assessment of the business side is of a sufficiently high standard, there is adequate awareness of risk and sufficient priority/capacity is allocated to risk themes. The departments included in this line of defense are:

- Corporate Banking
- SME & Retail Banking
- Islamic Banking
- Treasury
- Information Technology
- Operations

BASEL II PILLAR III AND BASEL III Disclosures

31 December 2024

4. Risk Exposure and Assessment (continued)

Second Line of Defense

The Risk, Compliance, Finance and Legal Departments falls under the second line of defense. Independent of the business side, the second-line risk and control functions formulate their own opinion regarding the risks confronting the Bank. In this way, they provide an adequate degree of certainty that the first-line control function is keeping these risks under control, without taking over primary responsibility from the first line. In this regard, the second-line functions are tasked to identify, measure and report risks. The risk function has a veto right to ensure that it is respected.

The second-line risk and control functions also support the consistent implementation of the risk policy, the risk framework, etc., throughout the Bank, and supervise how they are applied. Compliance is an independent function that aims to prevent the Bank from being exposed to compliance risk or suffering harm through non-compliance with the prevailing laws, regulations or internal rules.

Third Line of Defense

As the independent third-line of control, Internal Audit Department is responsible for the quality control of the existing business processes. It performs risk-based and general audits to ensure that the internal control and risk management system, including Risk Policy, are effective and efficient, and to ensure that policy measures and processes are in place and consistently applied within the Bank to guarantee the continuity of operations.

Fourth Line of Defense

Finally, there are additional external levels of controls that compliment three existing internal layers of control such as assurances from external independent bodies. External auditors are the common bodies under this line of defense. External auditors may not have the existing familiarity of the Bank that an internal audit department has, however, they can bring a new and valuable perspective. Accordingly they are important in the Bank's overall governance and control structure even though they are outsiders of the Bank.

Policies and Procedures:

The Board of Directors approve the Bank's risk appetite, risk management strategies, policies and the framework for their effective implementation and control, including delegated authorities to the Executive Committee and Management to approve all risk exposures. In this context, the Board of Directors has approved the following policies:

1	Anti-Money Laundering and Sanctions Policy	24	Fraud Risk Management Policy
2	Asset Management Policy	25	Human Resources Policy
3	Board Remuneration Policy	26	Information Security Policy
4	Brokerage Policy	27	Liquidity and Funding Policy
5	Business Continuity Management	28	Market Risk Policy
6	Capital Management Policy	29	Operational Risk Management Framework
7	Charity Policy	30	Operational Risk Management Policy
8	Classification and Measurement Financial Assets and Liabilities	31	Outsourcing Management Policy
9	Cloud Policy	32	Personal Account Dealing Policy
10	Code of Business Conduct	33	Product and Consumer Protection Policy
11	Compliance Policy	34	Profit Distribution Policy
12	Corporate Communication, Marketing and Branding Policy	35	Risk Management - Approach and Framework
13	Corporate Governance Policy	36	Security and Safety Policy and Procedures
14	Corporate Social Responsibility Policy	37	Segregation of Funds Policy
15	Cost Sharing Policy	38	Shari'a Governance Manual
16	Credit and Investment Policy	39	Social and Environment Management System Policy and Procedures
17	Customer Complaints Redressal Policy	40	Social Media Policy
18	Disclosure Policy	41	Treasury & Investment Policy
19	Dividend Policy	42	Voice Recording Policy
20	Electronic Banking Policy	43	Wealth Management Policy
21	Expense Policy	44	Whistle Blowing Policy
22	Financial Institutions Policy	45	Zakah Policy
23	Fraud Risk Management Framework		

BASEL II PILLAR III AND BASEL III Disclosures

31 December 2024

4. Risk Exposure and Assessment (continued)

All policies are subject to periodical reviews. Any change in law or regulation is deemed to be automatically adopted and implemented immediately upon its issuance (i.e. prior to the final amendment of the underlying policy or procedure).

The bank has exposure to the following risks:

5. Credit Risk

Qualitative Disclosure

Credit risk arises from the potential financial loss resulting from customers / counterparties failing to honor the terms of their contracts. It also includes the risk of loss in portfolio value as a result of migration from lower risk to higher risk categories. The Bank evaluates both settlement and pre-settlement credit risk at the customer level, across all products of the Bank.

Credit risk is the most significant risk incurred by the Bank, and proactive management is critical to the Bank's long-term success.

The Bank has a comprehensive due diligence system for approving credit facilities, and well defined policies on controlling credit risk at the counter-party, group, economic sector, and country levels.

All corporate, bank and sovereign credit requires independent credit risk review to be approved by authorities, from Level II to the Board, depending on their delegated credit approval authority (CAA). All credit approvals are strictly in accordance with the regulatory guidelines issued from time to time by the CBO. Exceptions in retail credit exposure are escalated to Risk Management Department for necessary approvals.

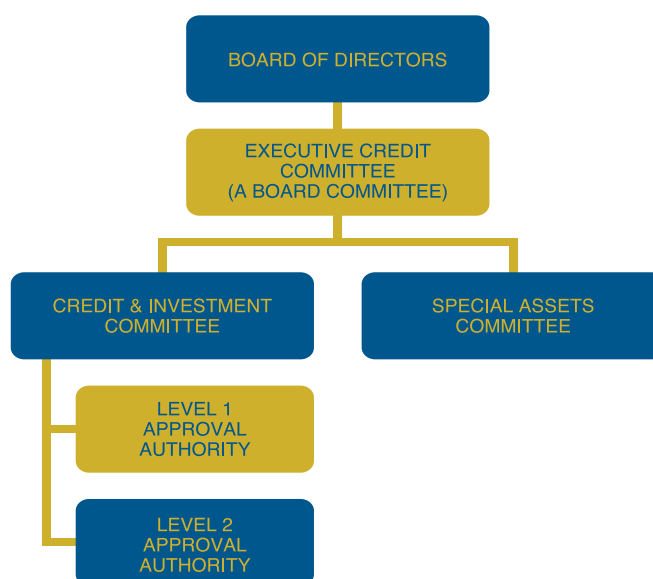
Risk Management quantifies the Bank's credit risk appetite in line with the Bank's strategic direction. A well-established process exists to ensuring the allocation of capital for the total credit risk to be assumed by the Bank; and measuring the actual use of capital at portfolio level.

With regard to credit culture, Risk Management ensures that the appropriate policies, guidelines, processes and procedures exist to cover all business areas of credit risk. It also ensures the consistent application of credit standards through a diligent Credit Review function and post approval review of loans through a Loan Review Mechanism (LRM) function and the periodic review and updating of credit policies, guidelines and procedures.

The Bank also has a robust system of borrowers' risk ratings that assesses the risk of corporate borrowers and monitors ratings changes periodically. In case of financial institutions, ratings by credit rating agencies are considered.

Structure and policies of credit risk management

The credit risk management policies are governed through Credit Risk Management Committee, Executive Risk Committee of the Board and the Board of Directors. The following is the structure of credit risk approval:-



The Bank has set up internal limits and approval authorities at various Management and Board Level Committees or the full Board based on the product category like Commercial Banking Lending, Country Limits or Limits for lending to Banks / FIs or Sovereigns and also lending related to the Bank's brokerage activities, the legal nature of the borrowers and their credit risk rating.

BASEL II PILLAR III AND BASEL III Disclosures

31 December 2024

5. Credit Risk (continued)

In regards to transaction risk, Risk Management ensures that credit is underwritten according to approved standards and that all risks are highlighted in the credit risk review, including policy exceptions. It includes analyzing and reporting on the nature of on- and off-balance sheet counter-party exposure (size, tenor, complexity and liquidity), including secured and unsecured credit facilities. To safeguard against concentration risk, sectoral limits have been set for ensuring that the Islamic window is having a well-diversified portfolio, the same is being reviewed by the Bank on a regular basis.

The Credit Risk Management Committee (CRMC) oversees, adherence to the limits, exceptions and makes recommendations to the Board in respect of policy related matters pertaining to credit risk management.

Past due credit exposures and Impairment policy

As a matter of policy, the Bank creates allowance for impairment of financing contracts promptly and in a consistent manner. The Bank has adopted IFRS 9" Financial Instruments" accounting standard in 2018 based on which impairment is assessed on a forward-looking expected credit loss (ECL) basis, as required by CBO.

The ECL Allowance is based on the credit losses expected to arise over the life of the asset (Lifetime ECL), unless there has been no significant increase in credit risk since origination, in which case, the allowance is based on 12 months expected credit loss (12 month ECL).The 12 month ECL is the portion of lifetime ECL that represent the ECLs that result from default events on a financial instrument that are possible within 12 months after the reporting date.

The Bank has established a policy to perform an assessment on a monthly basis whether a financial instrument's credit risk has increased significantly since initial recognition, by considering the change in the risk of default occurring over the remaining life of the financial instrument.

Based on the above process, the Bank groups its financing exposure into Stage 1, Stage 2 and Stage 3, as classified below:

Stage 1:

When Loans and advances & financing are first recognized, the Bank recognizes an allowance based on 12 month ECLs. Stage 1 financing exposure also include facilities where the credit risk has improved and the financing exposure has been reclassified from stage 2.

Stage 2:

When a Loans and advances & financing exposure has shown a significant increase in credit risk since origination, the Bank records an allowance for lifetime ECLs. Stage 2 financing exposure also include facilities, where the credit risk has improved and the financing exposure has been reclassified from stage 3.

Stage 3:

Loans and advances & financing exposure considered credit impaired. The Bank records an allowance for lifetime ECLs.

The Bank considers a financial asset to be in default when:

- the borrower is unlikely to pay its credit obligations to the Bank in full, without recourse by the Bank to actions such as realizing security (if any is held); or
- the borrower is past due more than 90 days on any material credit obligation of the Bank.
- in case of Treasury and interbank balances, when the required intraday payments are not settled by the close of business as outlined in the individual agreements.

Quantitative Disclosure:

i) Total gross credit risk exposures, plus average gross exposure over the period broken down by major types of credit exposure: (RO '000)

Type of credit exposure	Average gross exposure		Total gross exposure	
	31-Dec-24	31-Dec-23	31-Dec-24	31-Dec-23
1 Overdrafts	91,192	90,108	79,700	95,699
2 Personal loans	792,552	739,361	847,035	769,639
3 Loans and against trust receipts	77,960	80,727	83,370	79,929
4 Other loans	1,983,609	1,818,471	2,101,093	1,843,143
5 Bills purchased/ discounted	11,517	11,581	13,002	13,101
Total	2,956,830	2,740,248	3,124,200	2,801,511

BASEL II PILLAR III AND BASEL III Disclosures

31 December 2024

5. Credit Risk (continued)

ii) Geographic distribution of exposures by major type of credit exposure: (RO '000)

Type of Credit Exposure	Oman	Other GCC countries	Total
1 Overdrafts	79,700	-	79,700
2 Personal loans	847,034	1	847,035
3 Loans against trust receipts	83,370	-	83,370
4 Other loans	2,075,345	25,748	2,101,093
5 Bills Purchased/discounted	13,002	-	13,002
Total	3,098,451	25,749	3,124,200

iii) Industry or counter party type distribution of exposures, broken down by major types of credit exposure: (RO '000)

Economic sector	Overdrafts	Loans	Bills purchased/ discounted	Total	Off Balance Sheet Exposure
1 Wholesale and retail trade	20,605	233,182	6,023	259,810	34,561
2 Mining and quarrying	1,919	286,934	984	289,837	1,538
3 Construction	13,069	327,475	1,221	341,765	45,841
4 Manufacturing	11,549	135,560	1,611	148,720	41,414
5 Transport and communication	1,022	286,820	-	287,842	1,255
6 Electricity, gas and water	456	108,565	-	109,021	13,095
7 Financial institutions	699	343,118	1,378	345,195	4,355
8 Services	8,352	396,618	1,785	406,755	27,987
9 Personal loans	11,644	835,391	-	847,035	14
10 Government	1	17,349	-	17,350	17,307
11 All others	10,384	60,486	-	70,870	2,454
Total	79,700	3,031,498	13,002	3,124,200	189,821

iv) Residual contractual maturity of the whole portfolio, broken down by major types of credit exposure:(RO'000)

Time Band	Overdraft	Loans	Bills purchased/ discounted	Total	Off Balance Sheet Exposure
1 Upto 1 Month	3,869	508,668	4,135	516,672	23,705
2 1-3 Months	3,869	203,687	6,023	213,579	21,227
3 3-6 Months	3,869	120,563	2,163	126,595	24,824
4 6-9 Months	3,869	47,653	681	52,203	9,124
5 9-12 Months	3,869	48,511	-	52,380	27,216
6 1-3 Years	20,119	308,861	-	328,980	53,855
7 3-5 Years	20,119	307,236	-	327,355	24,219
8 Over 5 Years	20,117	1,486,319	-	1,506,436	5,651
Total	79,700	3,031,498	13,002	3,124,200	189,821

BASEL II PILLAR III AND BASEL III Disclosures

31 December 2024

5. Credit Risk (continued)

v) Major industry or counterparty type :(RO'000)

The Bank has set aside an additional amount of RO 0.298 million as a non-distributable special reserve on restructured loans based on CBO circular as at 31 December 2024.

			Of which Stage 3 exposure	Stage 1 & Stage 2 allowance	Stage 3 allowance*	Impairment allowance made during the year	Advances written off, net during the year
	Economic sector	Gross loans					
1	Wholesale & retail trade	259,810	15,777	4,036	10,016	(2,836)	595
2	Mining & quarrying	289,837	3,002	124	2,049	136	-
3	Construction	341,765	34,445	6,960	15,873	12,493	1,003
4	Manufacturing	148,720	12,295	3,392	5,853	(128)	1,291
5	Electricity, gas & water	109,021	-	66	-	(108)	-
6	Transport & communication	287,842	1,341	266	827	(1,354)	533
7	Financial institutions	345,195	-	704	-	(214)	-
8	Services	406,755	13,376	7,699	4,481	(3,143)	2,966
9	Personal loans	847,035	14,972	1,899	9,914	(8,467)	8,330
10	Government	17,350	-	54	-	50	-
11	All others	70,870	34,199	9,036	18,671	(1,860)	9,195
	TotalTotal	3,124,200	129,407	34,236	67,684	(5,431)	23,933

*- Stage 3 allowance includes reserve interest amounting to RO 14.939 million.

vi) Amount of impaired loans broken down by significant geographical areas including, with the amounts of impairment allowances related to each geographical area:(RO'000)

			Of which Stage 3 exposure	Stage 1 & Stage 2 allowance	Stage 3 allowance *	Impairment allowance made during the year	Advances written off, net during the year
	Countries	Gross loans					
1	Oman	3,098,451	129,407	34,176	67,684	(5,025)	23,381
2	Other GCC countries	25,749	-	60	-	43	-
3	India	-	-	-	-	(448)	552
	Total	3,124,200	129,407	34,236	67,684	(5,430)	23,933

*- Stage 3 allowance includes reserve interest amounting to RO 14.939 million.

vii) Movement of gross loans during the year: (RO '000)

	Details	Stage 1	Stage 2	Stage 3	Total
1	Opening balance	2,202,737	488,593	110,181	2,801,511
2	Mitigation/ changes (+/)	(30,744)	(6,566)	37,310	-
3	New loans	439,728	5,649	8,041	453,418
4	Recovery of loans	82,780	21,824	2,192	106,796
5	Loans written off	-	-	23,933	23,933
6	Closing balance	2,528,941	465,852	129,407	3,124,200
7	Impairment allowance held	3,665	30,571	67,684	101,920
8	Reserve interest	-	-	14,939	14,939

Credit risk - Disclosures for portfolios subject to the standardized approach.

As part of the standardized approach, the Bank follows the simplified approach for credit risk capital charge calculation. Accordingly, keeping in view the CBO guidelines, the Bank has used the financial collaterals such as cash, acceptable bank guarantees and shares listed on the MSM main index as part of the credit risk mitigation for arriving at the capital adequacy.

BASEL II PILLAR III AND BASEL III Disclosures

31 December 2024

5. Credit Risk (continued)

Qualitative Disclosures:

The Bank is following Moody's, S&P and Fitch rating for both sovereign and interbank exposures and the balance is treated as unrated at 100% risk. As per the guidelines, the ratings corresponding to the two lowest risk weights are considered and the higher of the two risk weights is applied. There has been no change in the approach compared to previous year.

The bank uses the discretion to treat loans and advances as unrated at risk weight of 100%, except housing loans and SME which are risk weighted at 35% and 75% based on the requirements as stipulated in the guidelines issued by CBO.

Similarly, the bank uses the discretion of the simple approach for recognizing collaterals.

Quantitative Disclosures:

Gross exposure amount as at 31 December 2024, subject to the standardized approach is as below:

Sr. No.	Product / Rating	Capital Charge					Above 100%	RO '000's
		0%	20%	35%	50%	75%		Total
Rated								
1	Sovereign	301,329	-	-	-	-	-	301,329
2	Banks	-	26,033	-	89,400	-	490	115,923
3	Corporate	-	-	-	-	131,859	-	131,859
Unrated								
1	Corporate	-	-	-	-	-	1,840,201	1,840,201
2	Banks	-	835	-	4	-	-	839
3	Retail	-	-	-	-	-	452,114	452,114
4	Claims secured by residential property	-	-	279,840	-	-	97,822	377,662
5	Claims secured by commercial property	-	-	-	-	-	170,797	170,797
6	Past due loans	-	-	-	-	-	47,834	47,834
7	Other assets	18,403	-	-	-	-	222,363	240,766
Total Banking Book		319,732	26,868	279,840	89,404	131,859	2,831,621	3,679,324

Credit Risk Mitigation - Disclosures for standardized approaches

Qualitative disclosure

Credit risk mitigation (CRM) encompasses collateral management and credit guarantee arrangements. The policies and processes for on- and off-balance sheet netting (and the extent to which the Bank makes use of them); policies and processes for collateral valuation and management; and a description of the main types of collateral taken are described below.

In respect of real estate collateral, two valuations are obtained if the value of collateral exceeds a particular level: the lowest valuation is used. The Bank also has a mandatory requirement to obtain an insurance policy on real estate collateral (other than land) where the policy is assigned in the Bank's favor. Real estate collateral is valued on regular intervals and also on need basis based on the assessment of risk and economic scenario prevailing.

The Bank normally accepts the following types of collateral:

- Cash margins and fixed deposits
- Real estate comprising income-producing and non-income-producing assets.
- Shares listed on recognized stock exchanges located in GCC
- Irrevocable and unconditional guarantees / standby LC issued by acceptable Banks
- Debt securities subject to meeting approved criteria.
- Funds subject to meeting approved criteria

The Bank also accepts guarantees of individuals and corporates to mitigate risks, wherever applicable and has a system of assessment of their creditworthiness.

BASEL II PILLAR III AND BASEL III Disclosures

31 December 2024

5. Credit Risk (continued)

Management monitors the market value of collateral at regular interval and requests additional collateral in accordance with the underlying agreement in case of shortfall. The Bank also periodically reviews the collateral cover for determining the adequacy of the allowance for impairment losses. The fair value of collateral that the bank held as at 31 December 2024 towards loans & advances not impaired amounted to RO 1,826.750 million.

Quantitative disclosure

As per Basel & CBO guidelines the Bank stands in possession of the following eligible collateral:

1) Cash 2) Shares 3) Sovereign Guarantee.

Exposure covered by cash collateral – RO 73.585 million; after application of haircut (0%) exposure stands at Nil.

Exposure covered by Shares collateral – RO 175.414 million; after application of haircut (50%) exposure stands at RO 87.707 million.

Exposure covered by Sovereign guarantee – RO 100.000 million; after application of haircut (0%) exposure stands at Nil.

Particulars	RO 'Mn
Gross Exposure - banking book	3,679
Credit risk mitigation	(164)
Risk weight impact - for banking book	(491)
Risk weighted assets - banking book	3,024
Capital charge for credit risk	408

Counterparty Credit Risk:

Counterparty Credit Risk (CCR) is the risk that the customer or trading counterparty of the Bank, usually an OTC derivative contract, may fail to fulfill its obligation which may result in replacement or termination of transaction at a loss to the Bank.

Bank has implemented Current Exposure Method (CEM) for the measurement of Risk Weighted Assets under CCR. Exposure under CEM method is defined as sum of Potential Future Exposure (PFE) and Current Credit Exposure (CCE). The PFE is the estimate of amount of exposure that may occur over a one year time horizon while CCE is the sum of positive MTM (Mark to Market) values. Bank has total exposure (CEM) on account of OTC derivatives (FX forwards, Interest Rate Swaps etc.) and RWA of RO 3.772 million as at 31 December 2024.

6. Market Risk

Qualitative disclosure

Substantially all of the Bank's businesses are subject to the risk that market prices and rates will move and result in profits or losses for the Bank. Market risk arises from fluctuations in interest rates, foreign exchange rates, commodity and equity prices. Market risk has been categorized into interest rate risk, equity position risk and foreign exchange risk. The Bank does not take any trading positions in commodities

The Bank has a robust Market Risk Management framework which comprises of risk identification, setting up of limits, monitoring, reporting, escalation matrix and resolution. The policy and procedure ensures that all limits are within risk appetite of the Bank and approved by the Board.

Details of various market risks are as below:

Interest Rate Risk Principles and Framework

Interest rate risk arises from the possibility that changes in interest rates will affect the value of underlying financial instruments. The Bank is exposed to interest rate risk as a result of mismatches or gaps in the amounts of assets and liabilities and off balance sheet instruments that mature or re-price in a given period. The Bank's overall goal is to manage interest rate sensitivity so that movements in interest rates do not adversely affect the Bank's net interest income. Interest rate risk is measured as the potential volatility in net interest income caused by changes in market interest rates. The Bank manages this risk by matching or hedging the re-pricing profile of assets and liabilities through various risk management strategies.

Interest Rate Risk in Trading Book

Interest rate risk in the trading book is the risk of losses in the market value of underlying financial instruments and arises from the sensitivity of interest bearing instruments to interest rate volatility. Interest rate risk in the trading book is monitored through notional exposure limits, stop loss limits, and maximum maturity limits, and is marked to market.

As of 31 December 2024, there were no significant trading book position sensitive to interest rate changes.

BASEL II PILLAR III AND BASEL III Disclosures

31 December 2024

6. Market Risk (continued)

Equity Position Risk

Equity position risk occurs due to change in market value of the Bank's equity portfolio due to change in general market or security specific conditions. The ALCO monitors all equity investment on periodic basis. The Market Risk and Mid Office is responsible to ensure appropriate risk limits are in place and reports the same to appropriate authorities.

As of 31 December 2024, equity investments classified as FVTPL amounted to OMR 17.780 million.

Foreign Exchange Risk

Foreign exchange risk is the risk that the foreign currency positions taken by the Bank may be adversely affected due to volatility in foreign exchange rates. Foreign exchange risk management is ensured through regular measurement and monitoring of open foreign exchange positions. Treasury takes every possible measure to cover open positions created by customer transactions.

Instruments used to mitigate this risk are foreign exchange spot, forwards, deposits, etc. These instruments help to insulate the Bank against losses that may arise due to significant movements in foreign exchange rates. All foreign exchange exposures are centrally managed by the Bank's Treasury and are daily marked to market. Limits have been assigned with respect to overnight open exposures, stop loss and authorized currencies to monitor and control foreign exchange exposures.

The Bank treats its entire Foreign Exchange Exposure under Basel II Standardized method for capital calculation. The Net open position in all foreign currencies stands at RO 143.907 million (including RO 138.707 million open position which is pegged to USD) as on 31 December 2024.

Quantitative Disclosure:

Capital Charge:

The exposure under the trading book of the Bank includes relatively small foreign exchange exposure primarily arising from the holding of day-end positions in currencies overnight, and exposure towards interest rate related instruments. Positions are monitored on daily basis to ensure open currency position is maintained within the regulatory limit. For the purpose of capital charge, the three month average of the sum of the net short positions or net long positions, whichever is higher, is taken. The average is worked out on the basis of the actual positions as obtained on all the working days during the three month period immediately preceding the reporting date. The exposures are daily monitored by the Middle Office as per the approved stop loss and exposure limits.

Table showing capital charge for interest rate, equity and FX risk as on 31 December 2024 is shown below:

Type of risk	2024	2023
	RO '000	RO '000
Interest rate risk	-	-
Equity position risk	2,845	2,541
Foreign exchange risk	7,834	3,893
Percentage of NOP to regulatory capital	27.61%	8.39%
Regulatory ceiling (% to total network)	40%	40%

Total risk weighted assets for trading book is RO 188.95 million with capital charge of RO 25.508 million.

Investments in the banking book

The Bank's investments will have to be within the overall limits and restrictions as CBO may prescribe from time to time.

However, the Bank has set up internal limits and approval authorities at various Management and Board Level Committees or the full Board of Directors based on the product category like Repo, CBO CD or Equity / Bonds, as a percentage of the Capital Base of the Bank. All investment proposals are routed through the ALCO to the relevant approval authority.

In addition to the CBO restrictions on investments by banks, and such internal limits as described above, the following restrictions will apply:

The Bank's appetite for private subscriptions and unlisted / unquoted equity is low, and any such proposals should be adequately justified on a case by case basis, and has to be approved at least by the Executive & Credit Committee and by the Board if it exceeds limits structured as a proportion of the Bank's capital base.

BASEL II PILLAR III AND BASEL III Disclosures

31 December 2024

6. Market Risk (continued)

All investments of the Bank should be in either USD or USD pegged GCC currencies or any investments in other currencies should be approved at least by the Executive & Credit Committee if it exceeds limits structured as a proportion of the Bank's capital base, after review and recommendation of the ALCO. Aggregate investments in all such currencies should not exceed a limit based on the Bank's capital base unless approved by the Board of Directors. This should include all investments through any Fund Manager, or proprietary investments made through the Bank's Asset Management Department.

Any investments of the Bank outside the GCC countries or US will have to be specifically approved by at least the Executive & Credit Committee if it exceeds limits structured as a proportion of the Bank's capital base. This should include all investments through any Fund Manager, or proprietary investments made through the Bank's Asset Management Department.

The Bank will try to achieve reasonable diversification of its equity investment portfolio among the economic sectors, and will not exceed a certain limit of its investment portfolio in any particular industry / sector groups listed below:

- a) Trading and retailing
- b) Real estate development, management and rental income
- c) Construction / contracting and building materials
- d) Travel / tourism, hotels, restaurants, entertainment, health services and education
- e) Warehousing / storage, logistics, supply management and transportation, utilities and telecom
- f) Oil and gas
- g) Banking and financial services
- h) Conglomerates or holding companies investing in any of the above business lines
- i) Information Technology
- j) Pharmaceuticals
- k) Manufacturing and Industrials

This should include all proprietary investments made through the Bank's Asset Management Department.

Any proposal that leads to contravention of the above or any proposal for investment in any sector or industry not listed above will need approval of the Executive Credit Committee.

All investment approval requests for specific transactions or trading limits must be made by the relevant Business Line, approved by the Credit and Investment Committee and submitted to the Executive & Credit Committee as delegated. Any approval above those delegated limits is to be elevated to the Board level for approval. Any restrictions on investments as per effective CBO regulations shall apply. The details of investments are provided in Note 8 of the financial statements.

Investment exits/ Stop loss (does not cover Asset Management Division operations)

Exit strategies is clearly outlined in all investment proposals. In case of a change in the exit strategy, approval from the same approving body is obtained. Sale of FVOCI investments to book profit is approved/ ratified by the ALCO.

The tolerance level of a decrease in the value of an FVTPL investment is a maximum of 15% (in a particular financial year). Investments exceeding this threshold are exited. Any holding with loss equivalent or greater than 10% (in a particular financial year) are notified to ALCO members. In case an investment is witnessing a material change (downgrading or expected downgrade, etc.), the Business Unit outlines the action/remedial plan for ALCO's review. Based on its review, ALCO decides the most appropriate strategy and notify the Credit and Investment Committee.

Interest Rate Risk in Banking Book (IRRBB)

The Bank monitors its interest rate risk in the banking book through performing repricing gap analysis of interest rate sensitive assets and liabilities. Under repricing gap analysis, the Bank distributes interest rate sensitive assets and liabilities into time bands according to their maturity (if fixed rate) or time remaining to their next repricing (if floating rate). The size of the gap for a given time period – that is assets minus liabilities that reprice or mature within that time band – gives an indication of the Bank's repricing risk exposure. The Bank evaluates the effect of a parallel shift in yield curve on its economic value by applying a proxy for modified duration multiplied by the assumed parallel change in interest rates to the gap under each time band.

The nature of IRRBB and key assumptions, including assumptions regarding loan prepayments and behavior of non-maturity deposits, and frequency of IRRBB measurement, are given below.

Interest rate risk is mainly related to retail banking book as they are re-priced with any change in the CBO's interest rate and for corporate customer re-priced in line with the market conditions.

BASEL II PILLAR III AND BASEL III Disclosures

31 December 2024

6. Market Risk (continued)

Deposits are re-priced based on their final maturity, or if linked to a floating rate index, on the re-pricing date. Deposits that are insensitive to interest rate movements are categorized separately. The earnings at risk are calculated based on interest rate re-pricing gaps. The Bank is confident of sourcing the cheaper source of funds by way of customers' deposits. ALCO along with the risk management department identifies interest rate risk and these are monitored and reported periodically. Rate sensitive exposures are quantified using re-pricing gaps.

Quantitative Disclosure:

Exposure and sensitivity analysis

The sensitivity of interest rate risk is determined by applying 200 bps interest rate shock on net interest income and assessing the impact on Capital. The impact of a 200 basis points parallel shift in interest rate is provided below:

	2024	2023
	RO '000	RO '000
Impact of +200 bps interest rate increase	13,909	18,112
Impact of -200 bps interest rate decrease	(13,909)	(18,112)
Impact of +200 bps interest rate increase as % of Capital	+2.65%	+3.07%
Impact of -200 bps interest rate decrease as % of Capital	-2.65%	-3.07%

The bank's interest sensitivity position, in line with guidelines issued by Central Bank of Oman, based on contractual re-pricing arrangements at 31 December 2024 is highlighted in Note 35.3.2 of the financial statements.

7. Liquidity risk

Qualitative Disclosure

The Bank defines liquidity risk as its ability to meet all present and future financial obligations in a timely manner and without undue effort and cost through unconstrained access to funding at reasonable market rates and without affecting asset growth and business operations.

The following key factors are taken into consideration while assessing and managing the liquidity risk of the Bank:

- The need to have a well-diversified base for funding sources, comprising a portfolio of retail customers, large corporates and institutions, small & medium enterprises, high net worth individuals, without significant concentrations or correlations, thereby diversifying the funding base and mitigating concentration risks.
- Based upon the past behavioral pattern analysis of our main liabilities, management expects large portion of customer deposits to be rolled over at contractual maturity.
- As per the CBO directives, the Bank keeps at least 5% of its Demand & time deposit liabilities with CBO in the form of clearing balances
- Commitments for loans and advances are approved after taking into account the Bank's overall liquidity position.

The Bank's projected liquidity needs are analyzed, and optimum alternatives to manage the liquidity risk are discussed and approved in ALCO. The Risk Management department also independently reviews and evaluates the Bank's ability to access liquidity from different sources.

The Treasury and Risk management Departments identify liquidity at risk, which is monitored daily and reported periodically to ALCO. Liquidity and Funding Policy and a liquidity contingency plan have been established by the Bank.

Liquidity and Funding Policy

The Liquidity and Funding policy of the Bank is intended to ensure that liquidity requirements are prudently and effectively managed such that anticipated and unanticipated funding needs are met on an ongoing basis in a controlled manner at the least possible cost.

The Bank's ALCO reviews the Liquidity Policy annually and submits recommendations for changes, if any, to the Bank's Chief Executive Officer (CEO) for review and submission to the Executive Committee and Board as applicable.

BASEL II PILLAR III AND BASEL III Disclosures

31 December 2024

7. Liquidity risk (continued)

There are a number of techniques which the Bank uses to manage its Liquidity position. The key ones are:

- Placing limits on maturity mismatches
- Maintaining a stock of liquid assets
- Diversification of liabilities
- Access to wholesale markets
- Multi-currency liquidity management

The Bank also maintains significant investments in liquid instruments issued by Government & banks principally for maintaining liquidity. The Bank also has standby lines of credit to meet its obligations at any given time, if the need arises.

Stock of Liquid Assets

An adequate stock of high-quality liquid assets provides the Bank with the capacity to meet its obligations while any underlying problems affecting liquidity are addressed.

Such assets are clearly identified, their role defined and minimum holding levels are established and agreed by the ALCO. The degree of diversification of the liquid assets portfolio is reviewed by the ALCO on a monthly basis.

As per the guidelines of CBO, the Bank is required to maintain Liquidity Coverage Ratio (LCR) of at least 100%. Further, Net Stable Funding Ratio (NSFR) is also prescribed at a minimum of 100%. Internally, the Bank has implemented a more stringent requirement for these ratios which is reviewed by ALCO on a monthly basis. A detailed disclosure on the position of the Bank in regards to these ratios is contained later in this report.

Diversification of liabilities

The Bank seeks to maintain a diversified funding base and monitors the degree of diversification in its liability base on a monthly basis. Depositor concentration is reviewed by the ALCO on a monthly basis.

The liquidity policy recognizes the inherent value of the Bank's longer-term depositors. The Bank seeks to establish strong and lasting relationships with depositors and other liability holders so as to foster a stable funding base. Trends in liability balances by category are reviewed by the ALCO on a monthly basis.

The Bank also recognizes that an over reliance on short dated inter-bank deposits can lead to difficulties in extreme market conditions. The Bank's exposure to such deposits is reviewed by the ALCO on a monthly basis.

Multi-currency liquidity

Where positions in specific foreign currencies are significant to its business, the Bank addresses the measurement and management of liquidity in these individual currencies. It is considered appropriate to consolidate several (usually minor) currencies and monitor the aggregate exposure expressed in base currency.

When monitoring exposure in aggregate, the Bank assesses the convertibility of individual currencies, the timing of access to funds, the impact of potential disruptions to foreign exchange markets and exchange risks before presuming that surplus liquidity in one currency can be used to meet a shortfall in another currency.

Performance against limits is monitored daily by Treasury with any exceptions being immediately reported to ALCO members. Review of all liquidity positions against limits is performed by Head of Risk Management and Treasury based on figures produced by the Treasury Middle Office / Finance Department.

The Treasurer along with the Head of Risk Management derives and documents the Maturity Profile behavioral adjustments, based on redemptions and withdrawal requests. These are communicated to the ALCO for discussion and acceptance.

Liquidity Contingency Plan:

It is imperative for the Bank to maintain an adequate amount of liquid assets as a protection against a possible loss in the event of emergency situation. The Bank's Liquidity Contingency Plan (LCP) is approved by Board and addresses the institution's strategy for handling any liquidity crisis. LCP will serve as the blueprint for meeting its funding needs under stress environment in a timely manner and at a reasonable cost. It describes policies and procedures for managing or making up cash flow shortfalls in such situations at both solo and consolidated level.

The Bank has adopted quantitative and qualitative key warning indicators which is monitored by Market Risk team and presented to ALCO. The members of the Liquidity Crisis Management Team (LCMT) and ALCO are notified immediately should any of the early warning criteria be breached.

In the event of the plan being invoked, ALCO delegates the responsibility for the management of the Bank's liquidity to the LCMT. The LCMT is comprised of CEO (Chairman), DCEO Business Group, DCEO – Support Services, Head of Finance, Head of Treasury and Head of Risk.

BASEL II PILLAR III AND BASEL III Disclosures

31 December 2024

8. Liquidity risk (continued)

Quantitative disclosure

The maturity gaps are measured and reported as per CBO circular BM 955 dated May 7, 2003 and subsequent amendments including the CBO circular dated March 20, 2018 on Maturity of Assets and Liabilities. Disclosure pertaining to the maturity profile of assets and liabilities as at 31 December 2024 are provided in note 35.2.2 of financial statements. Following is the position of currency-wise cumulative gaps as % of cumulative liabilities as monitored against CBO prescribed maximum limits:

as of 31 December, 2024

Currency	Upto 1 month	1 - 3 months	3 - 6 months	6 - 9 months	9 - 12 months
Aggregate	45.23%	12.84%	-8.59%	-19.64%	-27.64%
OMR	38.12%	8.51%	-7.54%	-20.63%	-29.42%
USD	68.38%	26.92%	-17.18%	-20.61%	-24.61%
Others	74.46%	36.75%	23.99%	18.23%	10.52%

as of 31 December, 2023

Currency	Upto 1 month	1 - 3 months	3 - 6 months	6 - 9 months	9 - 12 months
Aggregate	99.35%	47.44%	20.08%	-2.89%	-21.85%
OMR	78.47%	42.29%	22.49%	-6.35%	-26.83%
USD	131.83%	48.74%	5.36%	-1.87%	-9.06%
Others	375.39%	217.44%	178.52%	153.68%	9.65%
CBO prescribed Limits	-15%	-15%	-20%	-30%	-35%

8. Operational risk

Operational Risk Framework

Operational risk is the risk of direct or indirect loss resulting from inadequate or failed internal processes, people and systems or from external events.

Losses from external events such as a natural disaster that has a potential to damage the Bank's physical assets or electrical or telecommunication failures that disrupt business are relatively easier to define than losses from internal problems such as employee fraud and product flaws. The risks from internal problems are more closely tied to the Bank's specific products and business lines, they are more specific to the Bank's operations than the risks due to external events. Operational risks faced by the Bank include IT security, telecom failure, frauds, and operational errors.

Operational risk is controlled through a series of strong internal controls and audits, well-defined segregation of duties and reporting lines, operational manuals and standards. Internal audit independently reviews the effectiveness of the Bank's internal controls and its ability to minimize the impact of operational risks. The Bank has an Operational Risk Management Framework elucidating the processes involved in the operational risk management. There is an Operational Risk Committee that is the owner of this Framework and holds responsibility.

The Bank identifies and assesses the operational risk inherent in its key material products, activities, processes and systems. It also ensures that before any new products or services, activities, processes or systems are introduced; the associated operational risks are properly assessed and mitigated.

Risk identification is vital to the development of operational risk monitoring and control systems. Risk identification considers internal factors such as the Bank's structure, the nature of its activities, the quality of its human resources, organizational changes, and employee turnover. It also examines external factors such as changes in the industry, major political and economic changes, and technological advances.

The Bank has identified the following operational risks and has been implementing an effective framework to manage them:

- Fraud Risk
- Process Risk
- Legal Risk
- People Risk
- Compliance Risk
- IT Risk
- Physical Security Risk

BASEL II PILLAR III AND BASEL III Disclosures

31 December 2024

8. Operational risk (continued)

In order to effectively manage the risks arising from frauds, in line with the CBO Circular on Fraud Risk Management, the Bank has introduced separate Fraud Risk Management (FRM) Policy and FRM Process. The FRM unit forms part of the Operational risk management division of Risk Management functions and is independent of other departments.

Control and Mitigation of Operational Risk

The Bank has established policies, processes and procedures to control and mitigate material operational risks. It periodically reviews risk limitation and control strategies and adjusts the operational risk profile accordingly, using appropriate strategies in light of its overall risk appetite and profile.

Towards this, the Bank has implemented Operation Risk Self-Assessment (ORSA) procedure for each of its business segments, where operating risk related to each business area is identified; documented and corresponding control processes are defined and documented. The action points arising from ORSA are reviewed and reported at the Operational Risk Committee on a regular basis. The Bank also has Key Risk Indicators (KRIs) in place and monitors these on a regular basis.

The Bank ensures that there is appropriate segregation of duties and personnel are not assigned responsibilities that may create a conflict of interest or enable them to conceal losses, errors or inappropriate actions.

The Bank ensures adequate internal audit coverage to verify that operating policies and procedures have been implemented effectively.

The Bank takes insurance cover to mitigate operational risk, wherever applicable.

It also ensures that internal practices exist to control operational risk such as:

- Maintaining safeguards for access to, and use of, the Bank's assets and records;
- Ensuring staff have appropriate expertise and training; and
- Regularly verifying and reconciling transactions and accounts.

Reputation Risk

Reputation Risk is negative public opinion/reaction which could cause damage to the Bank's profitability or image. Reputation risk is one of the most complex risks to manage in view of unpredictability, constant change in the operating environment, personnel turnover and multi-cultural environment that the Bank operates in. The Bank identifies, measures, monitors and controls reputation risk arising in the following areas:

- Customer service
- Perception of stakeholders regarding Bank's commitment to their interests
- Quality of products, services and sales practices
- Reporting to stakeholders and external agencies
- Accuracy of information in communications to the public

There are policies and procedures in place to manage and monitor reputation risk.

Social Media risk is an important element of Reputation risk that has emerged with the popularity of social media and digital technologies. The Bank recognizes the importance of effectively managing the interests of the Bank and its customers from this dynamic and unregulated category of risk. The Corporate Communication Department (CCD) is responsible for managing the Bank's social media activities within the guidelines of 'Social Media Policy'.

Business Continuity Risk

The Bank has documented the Business Continuity Management Policy (BCP) which outlines the business continuity process to be followed in a disaster scenario, and undertakes comprehensive testing of all its critical systems and processes. The BCP aims to minimize the severity and impact of a disaster while continuing to serve both the business and customers with a lowest achievable detriment in service. The plan considers the following:

- Disaster scenarios and magnitude
- Various steps to mitigate the risk
- Impact on the Bank's business and operations
- The resources required for resuming the operations at the earliest possible time following the disaster
- Operating processes and available systems at the Disaster Recover (DR) site

BASEL II PILLAR III AND BASEL III Disclosures

31 December 2024

8. Operational risk (continued)

Business Continuity Test

During the year 2024, the Bank has carried out a comprehensive BCP test and an IT Control test on a working day in order to test the resilience of the Bank's business systems at the DR site. The scope of the test was arrived at based on the Business Impact Analysis (BIA) carried by the Bank and the results of the BCP/ volume tests were submitted to the Board. The Bank has in place a crisis management team, and the processes to be followed during a disaster scenario has been detailed out in the BCP documents of the Bank.

Fraud Risk Management

The Bank takes effective prevention and detection of fraudulent activities extremely serious and cooperate with the judicial and regulatory authorities and support national, regional and international initiatives to combat fraud. It endeavors to develop a culture of fraud awareness and prevention across all areas of its operations to limit possible financial losses and safeguard the brand and financial reputation of the Bank.

Concentration Risk

Concentration risk arises from exposure to a common set of factors that can produce losses large enough to threaten the Bank's health or ability to maintain its core business. Concentration risk can arise from large exposure to counterparty, a sector or country. Concentration risk can be mitigated by formulating limits, by a thorough check on counterparty's quality or adequate collateral support etc.

As part of ICAAP, thresholds for exposure concentrations has been set up, this will trigger additional capital requirements based on concentration in terms of large exposures to counterparties, sector exposure concentration (excluding retail lending) and geographical exposure concentration (other than to Oman).

Information Security Risk

The bank has adopted an Information Security Management System (ISMS) /process and a framework by which the Bank ensures, protects and secures information resources that process and maintain information which are vital to its operations. The main component of this framework is the Information Security Policy that provides direction for formulation, implementation, and management of Information Security Management System. Since protection of customer information is the top-most priority, the Bank strives to safeguard the confidentiality, availability and integrity of the data of its customers and business partners at all times. The bank has maintained ISO 27001 certification since 2012 and PCI DSS certification since 2015.

Compliance Risk (including risk of Shari'a Non-Compliance)

Compliance risk is the potential for financial losses, legal penalties, regulatory sanctions and loss to Bank's reputation that result from non-compliance with laws and regulations that are applicable on the Bank. The Board of Directors have direct responsibility for overseeing the management of the Bank's compliance risk. Senior management are thereafter responsible for ensuring effective management of this risk. They are supported by the Compliance function of the Bank which is an independent function that reports, and has direct access to Board Audit & Compliance Committee. The Bank's 'Compliance Policy' sets the guidelines to manage this important risk type.

Shari'a Governance framework ensures Shari'a compliance at all times and at all levels. Shari'a compliance unit facilitates the senior management in ensuring compliance with Shari'a and Islamic banking stipulations of the Central Bank in all its business activities, operations and transactions. Shari'a compliance unit is extensively involved before a new product or transaction is approved and monitors the implementation of guidelines issued by Shari'a Supervisory Board (SSB). No new product class or transaction type is executed without consulting the Shari'a compliance unit and getting a formal approval from the SSB.

Model Risk

Model risk is the potential for ineffective decision making or regulatory non-compliance resulting from the use of insufficiently accurate models, particularly in the areas such as measuring, pricing and managing risks. These models include, but are not limited to, capital calculation model, facility and obligor risk rating models, models to calculate expected credit losses and provisioning, pricing models for investments and hedges etc. The Bank manages this risk by following best-practices in regards to governance, data management, model validation and back-testing of its key models.

Other Risks

The Bank is also exposed to other risks such as, strategic risk, business cycle risk, legal risk, residual risk, settlement risk, Shariah non-compliance risk (Pertaining to Islamic Banking) etc. However, currently these risks are not significant to the Bank. The Bank follows standard methodologies for arriving at the capital adequacy requirements of these risks. These risks are assessed and such assessments form part of the Bank's ICAAP process.

BASEL II PILLAR III AND BASEL III Disclosures

31 December 2024

8. Operational risk (continued)

Operational risk capital charge and risk weighted amount

The Bank follows basic indicator approach for determining operational risk. The Capital charge for operational risk under Basic Indicator approach is calculated by taking the average of gross income multiplied by 15%, for each of the last three financial years, excluding years of negative or zero gross income. The gross income is Net interest income (+) Non-interest income (+) Provisions for unpaid interest (-/+ gain/ loss on sale of investments (-) extraordinary / irregular items of income.

Item (RO '000)	2024	2023	2022
Net interest income	73,902	76,296	73,845
Non-interest income	34,403	22,243	17,853
Provision for unpaid interest	(1,153)	4,358	3,515
Gain on sale of investment	121	(741)	(177)
Insurance and other irregular items	45	(4)	(12)
Gross income	107,318	102,152	95,024
Average Income	101,498		
Gross Income times of Alpha (15%)	15,225		
Operational risk based on Basic Indicator Approach	190,309		

Capital Charge for Operational Risk under Basic Indicator Approach as per Basel II is RO 13.978 million as of 31 December 2024.

The Risk weighted assets for operational risk as per Basel II is RO 174.724 million with the capital charge of RO 23.587 million.

9. Compensation Policy

In line with the CBO guidelines on remuneration disclosures as part of Pillar III, the Bank is committed to fair, balanced, performance-oriented compensation practices that align long-term employee and shareholder interests. The policy is endeavored to attract, retain and motivate the best people in the industry. The Bank has a Board appointed Nomination and Remuneration Committee whose primary objective is to advise the Bank's Board Chairman on the remuneration of Board members, appointment and remuneration of senior management personnel.

Performance awards are based on the achievement of both financial and non-financial objectives. The Performance Management System is aimed at achieving the Bank's business plans and objective through continuous and focused performance of the employees. The objective of Performance Review process is to assess the employee on his/her performance against assigned key Performance Indicators and objectives. At senior management levels, the overall Bank's performance is the overriding criteria while awarding performance awards. The payout is based on consideration of all aspects governing performance including the stage of business, market conditions, and time horizon of risks, sustainable returns and the cyclical nature of certain businesses. The Bank is committed to responsible compensation practices which balance reward based on performance and promoting principled behavior and actions. The compensation is designed to contribute to the Bank's objectives and encourages prudent risk taking and adherence to applicable laws, guidelines and regulations.

The compensation policy and arrangement for Senior Management, Material Risk takers and Control functions in regulated roles of the Bank are based on their responsibilities and authority levels and are governed by the instructions from CBO on the principles and standards of the Financial Stability Board and relevant CMA regulations.

The list of Senior Management and Material Risk Takers in regulated roles of the Bank is reviewed annually by the Board Nomination and Remuneration Committee (NRC) and takes into account changes in terms of internal organization and compensation levels.

The NRC review and approves all fixed and variable compensation including all benefits for the designated Senior Management and Material Risk Takers in regulated roles of the Bank to ensure that payments made are fair to the individual and the Bank, that failure is not rewarded and that the duty to maximize performance and mitigate loss is fully recognized.

In cases whereby, the variable compensation for Senior Management and Material Risk Takers exceeds threshold, the balance is being deferred and paid equally over the period of 3 years, subject to certain conditions relating to Malus and Claw-back criterion.

The key management comprises of 5 members (2023: 5 members) of the management committee. Total remuneration paid during the year was RO 1.745 million for 2024 (2023: RO 1.628 million)

The total amount of remuneration paid for the 24 Material risk takers (MRT) was RO 3.561 million. An amount of RO 0.393 million was deferred being above the threshold (31 December, 2023 - 23 Material risk takers, total amount paid RO 3.396 million, RO 0.311 million deferred)

BASEL II PILLAR III AND BASEL III Disclosures

31 December 2024

10. Subsidiaries and significant investments

The Bank does not have any subsidiary or other significant equity investments as on 31 December 2024.

11. Basel III Capital Disclosures

The below capital disclosures are prepared in accordance with the requirements of the CBO Circular BM 1114 'Regulatory Capital and Composition of Capital Disclosure Requirements under Basel III' issued on 17 November 2013.

11.1 The 3 step approach to reconciliation

Below disclosures are prepared using three step reconciliation approach as defined in the CP2-Guidelines on composition of capital disclosure requirements issued along with the CBO Circular BM 1114.

BASEL III COMMON DISCLOSURE TEMPLATE

Common Equity Tier 1 capital: instruments and reserves		RO (000's)
1	Directly issued qualifying common share capital (and equivalent for non-joint stock companies) plus related stock surplus/premium	244,966
2	Retained earnings (net of proposed cash dividend of 5.0%)	52,210
3	Accumulated other comprehensive income (and other reserves)	48,024
4	Proposed Stock Dividend	-
5	Common share capital issued by subsidiaries and held by third parties (amount allowed in group CET1)	-
6	Common Equity Tier 1 capital before regulatory adjustments	345,200
Common Equity Tier 1 capital: regulatory adjustments		
7	Prudential valuation adjustments	4,566
8	Goodwill (net of related tax liability)	-
9	Other intangibles other than mortgage-servicing rights (net of related tax liability)	6,544
10	Deferred tax assets that rely on future profitability excluding those arising from temporary differences (net of related tax liability)	-
11	Cash-flow hedge reserve	-
12	Shortfall of provisions to expected losses	-
13	Securitization gain on sale (as set out in paragraph 14.9 of CP-1)	-
14	Gains and losses due to changes in own credit risk on fair valued liabilities	-
15	Defined-benefit pension fund net assets	-
16	Investments in own shares (if not already netted off paid-in capital on reported balance sheet)	-
17	Reciprocal cross-holdings in common equity	-
18	Investments in the capital of banking, financial, insurance and takaful entities that are outside the scope of regulatory consolidation, net of eligible short positions, where the bank does not own more than the issued share capital (amount above 10% threshold)	-
19	Significant investments in the common stock of banking, financial, insurance and takaful entities that are outside the scope of regulatory consolidation, net of eligible short positions (amount above 10% threshold)	-
20	Mortgage servicing rights (amount above 10% threshold)	-
21	Deferred tax assets arising from temporary differences (amount above 10% threshold, net of related tax liability)	-
22	Amount exceeding the 15% threshold	-
23	of which: significant investments in the common stock of financials	-
24	of which: mortgage servicing rights	-
25	of which: deferred tax assets arising from temporary differences	-
26	National specific regulatory adjustments	-
27	Regulatory adjustments applied to Common Equity Tier 1 due to insufficient Additional Tier 1 and Tier 2 to cover deductions	-
28	Total regulatory adjustments to Common equity Tier 1	11,110

BASEL II PILLAR III AND BASEL III Disclosures

31 December 2024

11. Basel III Capital Disclosures (continued)

29	Common Equity Tier 1 capital (CET1)	334,090
Additional Tier 1 capital: Instruments		
30	Directly issued qualifying Additional Tier 1 instruments plus related stock surplus (31+32)	179,366
31	of which: classified as equity under applicable accounting standards	179,366
32	of which: classified as liabilities under applicable accounting standards	-
33	<i>Directly issued capital instruments subject to phase out from Additional Tier 1</i>	-
34	Additional Tier 1 instruments (and CET1 instruments not included in row 5) issued by subsidiaries and held by third parties (amount allowed in group AT1)	-
35	<i>of which: instruments issued by subsidiaries subject to phase out</i>	-
36	Additional Tier 1 capital before regulatory adjustments	179,366
Additional Tier 1 capital : regulatory adjustments		
37	Investments in own Additional Tier 1 instruments	-
38	Reciprocal cross-holdings in Additional Tier 1 instruments	-
39	Investments in the capital of banking, financial, insurance and takaful entities that are outside the scope of regulatory consolidation, net of eligible short positions, where the bank does not own more than 10% of the issued common share capital of the entity (amount above 10% threshold)	-
40	Significant investments in the capital of banking, financial and insurance entities that are outside the scope of regulatory consolidation (net of eligible short positions)	-
41	National specific regulatory adjustments	-
	OF WHICH: [INSERT NAME OF ADJUSTMENT]	-
	OF WHICH:	-
42	Regulatory adjustments applied to Additional Tier 1 due to insufficient Tier 2 to cover deductions	-
43	Total regulatory adjustments to Additional Tier 1 capital	-
44	Additional Tier 1 capital (AT1)	179,366
45	Tier 1 capital (T1 = CET1 + AT1)	513,456
Tier 2 capital: instruments and provisions		
46	Directly issued qualifying Tier 2 instruments plus related stock surplus	-
47	<i>Directly issued capital instruments subject to phase out from Tier 2</i>	-
48	Tier 2 instruments (and CET1 and AT1 instruments not included in rows 5 or 34) issued by subsidiaries and held by third parties (amount allowed in group Tier 2)	-
49	<i>of which: instruments issued by subsidiaries subject to phase out</i>	-
50	Provisions (including gain on investments)	7,752
51	Tier 2 capital before regulatory adjustments	7,752
Tier 2 capital: regulatory adjustments		
52	Investments in own Tier 2 instruments	-
53	Reciprocal cross-holdings in Tier 2 instruments	-
54	Investments in the capital of banking, financial, insurance and takaful entities that are outside the scope of regulatory consolidation, net of eligible short positions, where the bank does not own more than 10% of the issued common share capital of the entity (amount above the 10% threshold)	-
55	Significant investments in the capital banking, financial and insurance entities that are outside the scope of regulatory consolidation (net of eligible short positions)	-
56	Total National specific regulatory adjustments	-
	Of which: Investments in Tier 2 capital of unconsolidated banking and financial subsidiary companies, associates or affiliates etc.,	-
	Of which: shortfall in the Tier 2 regulatory capital in the unconsolidated entities	-
57	Total regulatory adjustments to Tier 2 capital	-
58	Tier 2 capital (T2)	7,752

BASEL II PILLAR III AND BASEL III Disclosures

31 December 2024

11. Basel III Capital Disclosures (continued)

59	Total capital (TC = T1 + T2)	521,208
60	Total risk weighted assets	3,388,956
60a	<i>Credit risk weighted assets</i>	3,024,408
60b	<i>Market risk weighted assets</i>	189,824
60c	<i>Operational risk weighted assets</i>	174,724
Capital Ratios and buffers		
61	Common Equity Tier 1 (as a percentage of risk weighted assets)	9.86%
62	Tier 1 (as a percentage of risk weighted assets)	15.15%
63	Total capital (as a percentage of risk weighted assets)	15.38%
64	Institution specific buffer requirement (minimum CET1 requirement plus capital conservation buffer plus countercyclical buffer requirements plus G-SIB buffer requirement expressed as a percentage of risk weighted assets)	9.500%
65	<i>of which: capital conservation buffer requirement</i>	2.500%
66	<i>of which: bank specific countercyclical buffer requirement</i>	-
67	<i>of which: G-SIB buffer requirement</i>	-
68	Common Equity Tier 1 available to meet buffers (as a percentage of risk weighted assets)	3.21%
National Minima (if difference from Basel 3)		
69	National Common Equity Tier 1 minimum ratio (if different from Basel 3 minimum)	9.500%
70	National Tier 1 minimum ratio (if different from Basel 3 minimum)	11.500%
71	National total capital minimum ratio (if different from Basel 3 minimum)	13.500%
Amounts below the thresholds for deduction (before risk weighting)		
72	Non-significant investments in the capital of other financials	35,334
73	Significant investments in the common stock of financials	-
74	Mortgage servicing rights (net of related tax liability)	-
75	Deferred tax assets arising from temporary differences (net of related tax liability)	-
76	Provisions eligible for inclusion in Tier 2 in respect of exposures subject to standardised approach (prior to application of cap)	7,112
77	Cap on inclusion of provisions in Tier 2 under standardised approach	37,812
78	Provisions eligible for inclusion in Tier 2 in respect of exposures subject to internal ratings-based approach (prior to application of cap)	-
79	Cap for inclusion of provisions in Tier 2 under internal ratings-based approach	-
Capital instruments subject to phase-out arrangements (only applicable between 1 Jan 2018 and 1 Jan 2022)		
80	Current cap on CET1 instruments subject to phase out arrangements	-
81	Amount excluded from CET1 due to cap (excess over cap after redemptions and maturities)	-
82	Current cap on AT1 instruments subject to phase out arrangements	-
83	Amount excluded from AT1 due to cap (excess over cap after redemptions and maturities)	-
84	Current cap on T2 instruments subject to phase out arrangements	-
85	Amount excluded from T2 due to cap (excess over cap after redemptions and maturities)	-

BASEL II PILLAR III AND BASEL III Disclosures

31 December 2024

11. Basel III Capital Disclosures (continued)

Step 1: Balance sheet under Regulatory scope of consolidation

Table 2a- Balance sheet under Regulatory Scope of Consolidation (RO '000)

Year ended 31 December 2024	Published financial statements	Under regulatory scope of consolidation
Assets		
Cash and balances with Central Bank of Oman	194,552	194,552
Certificates of deposit	-	-
Due from banks	113,331	113,331
Loans and advances	3,022,280	3,022,280
Investments in securities	344,236	344,236
Loans and advances to banks	-	-
Property and equipment	48,436	48,436
Deferred tax assets	-	-
Other assets	32,093	32,093
Total assets	3,754,928	3,754,928
Liabilities		
Due to banks	343,931	343,931
Customer deposits	2,762,767	2,762,767
Borrowings	-	-
Deferred tax liabilities	1,158	1,158
Other liabilities	89,053	89,053
Subordinated bonds	-	-
Total liabilities	3,196,909	3,196,909
Shareholders' Equity		
Paid-up share capital	244,966	244,966
Share premium	-	-
Legal reserve	48,024	48,024
Retained earnings	63,958	63,958
Special reserve	298	298
Impairment reserve	23,116	23,116
Cumulative changes in fair value of investments	(1,709)	(1,709)
Total shareholders' equity	378,653	378,653
Tier 1 Perpetual subordinated bonds	179,366	179,366
Total equity	558,019	558,019
Total liability and shareholders' funds	3,754,928	3,754,928

BASEL II PILLAR III AND BASEL III Disclosures

31 December 2024

11. Basel III Capital Disclosures (continued)

Step 2: Expansion of Balance sheet under Regulatory scope of consolidation

Table 2b – Expansion of Balance Sheet Under Regulatory Scope of Consolidation (RO '000)

For the period ended 31 December 2024	Published financial statements	Under Regulatory scope of consolidation	Reference
Assets			
Cash and balances with CBO	194,552	194,552	
Balance with banks and money at call & short notice	113,331	113,331	
Balance with banks and money at call & short notice, of which	-	113,345	
- Stage 1 / 2 impairment allowance, of which	-	(14)	
- amount eligible for T2		14	e
Investments, of which:	344,236	344,236	
Fair Value Through Other Comprehensive income (FVOCI)	-	119,289	
Fair Value Through Profit & Loss (FVTPL)	-	224,947	
- Stage 1 / 2 impairment allowance, of which		-	
- amount eligible for T2		-	
Loans and advances – Net, of which:	3,022,280	3,022,280	
- Loans and advances to domestic banks	-	-	
- Loans and advances to non-resident banks	-	-	
- Loans and advances to domestic customers	-	2,278,187	
- Loans and advances to non-resident for operations abroad	-	25,749	
- Loans and advances to SMEs	-	150,397	
- Financing from Islamic banking window	-	669,867	
- Expected credit loss allowance, of which	-	(101,920)	
- Stage 3 Impairment allowance and Reserve interest & profit	-	(67,684)	
- Stage 1 / 2 impairment allowance, of which	-	(34,236)	
- amount eligible for T2	-	6,860	e
- amount ineligible for T2	-	27,376	
Fixed assets	48,436	48,436	
- Intangibles (CET1 adjustment)	-	(6,544)	d
- Other fixed Asset	-	(41,892)	
Other assets	32,093	32,093	
Other assets, of which	-	32,145	
- Stage 1 / 2 impairment allowance, of which	-	(17)	
- amount eligible for T2	-	17	e
- amount ineligible for T2	-	-	
Total Assets	3,754,928	3,754,928	
Capital & Liabilities			
Paid-up Capital, of which:	244,966	244,966	
- Amount eligible for CET1	244,966	244,966	a
Reserves & Surplus; of which	313,053	313,053	
- Amount eligible for CET1 (Legal reserve)	-	48,024	c
- Amount eligible for CET1 (Subordinated debt reserve)	-	-	
- Amount eligible for CET1 (Retained earnings)	-	52,210	b
- Proposed cash dividend (removed from retained earnings)	-	11,748	
- Amount ineligible for CET1 (Special Reserve)	-	298	
- Amount eligible for AT1 (Tier 1 perpetual bonds)	-	179,366	
- Amount ineligible for T2 (Impairment reserve)	-	23,116	
- Amount eligible for T2 (Investments Fair value gains)	-	640	f

BASEL II PILLAR III AND BASEL III Disclosures

31 December 2024

11. Basel III Capital Disclosures (continued)

For the period ended 31 December 2024	Published financial statements	Under Regulatory scope of consolidation	Reference
- AFS investments fair value loss (CET1 adjustment)	-	(4,566)	d
- AFS investments fair value gain unutilized	-	2,217	
Total Capital	558,019	558,019	
Deposits from banks	343,931	343,931	
Customer deposits, of which	2,762,767	2,762,767	
- Deposits for customers	-	2,064,621	
- Deposits of Islamic Banking window	-	698,146	
Borrowings, of which:	-	-	
- From banks	-	-	
Borrowings in form of bonds, Debentures & sukuks, of which	-	-	
- Amount eligible for T2	-	-	
- Amount ineligible for T2	-	-	
Other liabilities & provisions	90,211	90,211	
Other liabilities & provisions , of which	-	91,686	
- Stage 3 provision	-	(240)	
- Stage 1 / 2 provision, of which	-	(1,235)	
- amount eligible for T2	-	221	e
- amount ineligible for T2	-	1,014	
TOTAL	3,754,928	3,754,928	

Step 3: Step Reconciliation of Regulatory Capital:

Common Equity Tier 1 capital: instruments and reserves (RO' 000)			
	For the year ended 31 December 2024	Component of regulatory capital reported by Bank	Source based on reference numbers/letters of the balance sheet under the regulatory scope of consolidation from step 2
1	Directly issued qualifying common share (and equivalent for non-joint stock companies) capital plus related stock surplus	244,966	a
2	Retained earnings	52,210	b
3	Accumulated other comprehensive income (and other reserves)	48,024	c
4	Common Equity Tier 1 capital before regulatory adjustments	345,200	
5	Prudential valuation adjustments	(11,110)	d
6	Deferred tax assets that rely on future profitability excluding those arising from temporary differences (net of related tax liability)	-	
7	Total regulatory adjustments to Common equity Tier 1	(11,110)	
8	Common Equity Tier 1 capital (CET1)	334,090	
9	Additional Tier 1 capital (AT1)	179,366	
	Tier 1 capital (T1 = CET1 + AT1)	513,456	
10	Directly issued qualifying Tier 2 instruments plus related stock surplus	-	
11	Expected credit loss allowance / Provisions	7,112	e
12	Fair value reserve of FVOCI investments	640	f
	Tier 2 capital before regulatory adjustments	7,752	
	Tier 2 capital: regulatory adjustments	-	
	Tier 2 capital (T2)	7,752	
	Total capital (TC = T1 + T2)	521,208	

BASEL II PILLAR III AND BASEL III Disclosures

31 December 2024

11. Basel III Capital Disclosures (continued)

11.2 Main Features of regulatory capital

Table below discloses the key features of all the regulatory capital issued by the Bank;

1	Ahli Bank SAOG	Common Equity Share Capital	Perpetual subordinated bonds (additional Tier 1)	Perpetual subordinated bonds (additional Tier 1)	Mandatory Convertible bonds (additional Tier 1)	Perpetual subordinated bonds (additional Tier 1)
2	Unique identifier (eg CUSIP, ISIN or Bloomberg identifier for private placement)	NA	NA	NA	NA	NA
3	Governing law(s) of the instrument Regulatory treatment	The laws of Oman in the form of Royal Decrees, Ministerial Decisions and CMA and CBO Regulations	The laws of Oman in the form of Royal Decrees, Ministerial Decisions and CMA and CBO Regulations	The laws of Oman in the form of Royal Decrees, Ministerial Decisions and CMA and CBO Regulations	The laws of Oman in the form of Royal Decrees, Ministerial Decisions and CMA and CBO Regulations	The laws of Oman in the form of Royal Decrees, Ministerial Decisions and CMA and CBO Regulations
4	Transitional Basel III rules	Common Equity Tier 1	Additional Tier I	Additional Tier I	Additional Tier I	Additional Tier I
5	Post-transitional Basel III rules	Common Equity Tier 1	Eligible	Eligible	Eligible	Eligible
6	Eligible at solo/group/group & solo	Solo	Solo	Solo	Solo	Solo
7	Instrument type (types to be specified by each jurisdiction)	Common Equity Share Capital	Rights issue of Perpetual subordinated bonds	Rights issue of Perpetual subordinated bonds	Mandatory Convertible bonds	Rights issue of Perpetual subordinated bonds
8	Amount recognised in regulatory capital (Currency in mil, as of most recent reporting date)	RO 244.966 million	RO 75 million	RO 54 million	RO 10.366 million	RO 40 million
9	Par value of instrument	RO 244.966 million	RO 75 million	RO 54 million	RO 10.366 million	RO 40 million
10	Accounting classification	Shareholders' Equity	Equity	Equity	Equity	Equity
11	Original date of issuance	Bank started operations in 1997	11-Aug-22	25-Dec-23	29-Apr-24	27-Jun-24
12	Perpetual or dated	Perpetual	Perpetual	Perpetual	Convertible into equity shares after 2 years	Perpetual
13	Original maturity date	No maturity	No maturity	No maturity	Convertible into equity shares after 2 years	No maturity
14	Issuer call subject to prior supervisory approval	No	Yes	Yes	No	Yes
15	Optional call date, contingent call dates and redemption amount	NA	The Bank May, at the end of five years and every interest payment date thereafter, redeem all but not some, of the bonds at nominal value, subject to prior approval from CBO.	The Bank May, at the end of five years and every interest payment date thereafter, redeem all but not some, of the bonds at nominal value, subject to prior approval from CBO.	NA	The Bank May, at the end of five years and every interest payment date thereafter, redeem all but not some, of the bonds at nominal value, subject to prior approval from CBO.

BASEL II PILLAR III AND BASEL III Disclosures

31 December 2024

11. Basel III Capital Disclosures (continued)

16	Subsequent call dates, if applicable	NA	NA	NA	NA	NA
	Coupons / dividends					
17	Fixed or floating dividend/coupon	Floating	Fixed	Fixed	Fixed	Fixed
18	Coupon rate and any related index	NA	7.50%	7.50%	6.00%	7.25%
19	Existence of a dividend stopper	NA	NA	NA	NA	NA
20	Fully discretionary, partially discretionary or mandatory	Fully discretionary	Fully discretionary	Fully discretionary	Mandatorily convertible	Fully discretionary
21	Existence of step up or other incentive to redeem	No	NA	NA	No	NA
22	Noncumulative or cumulative	Non-cumulative	Non-cumulative	Non-cumulative	Non-cumulative	Non-cumulative
23	Convertible or non-convertible	Non-convertible	Non-convertible	Non-convertible	Convertible	Non-convertible
24	If convertible, conversion trigger (s)	NA	NA	NA	Second anniversary of the issue date	NA
25	If convertible, fully or partially	NA	NA	NA	Fully	NA
26	If convertible, conversion rate	NA	NA	NA	Every 100 bonds will be converted to 69 shares	NA
27	If convertible, mandatory or optional conversion	NA	NA	NA	Mandatorily convertible	NA
28	If convertible, specify instrument type convertible into	NA	NA	NA	Bank's equity shares	NA
29	If convertible, specify issuer of instrument it converts into	NA	NA	NA	Bank's equity shares	NA
30	Write-down feature	Yes	Yes	Yes	Yes	Yes
31	If write-down, write-down trigger(s)	Statutory approach	Statutory approach	Statutory approach	Statutory approach	Statutory approach
32	If write-down, full or partial	Write down fully	Full or partial	Full or partial	Full or partial	Full or partial
33	If write-down, permanent or temporary	Permanent	Permanent	Permanent	Permanent	Permanent
34	If temporary write-down, description of write-up mechanism	NA	NA	NA	NA	NA
35	Position in subordination hierarchy in liquidation (specify instrument type immediately senior to instrument)	NA	Subordinate to deposit holders, general creditors, holders of Tier 2 subordinated debt/bonds/sukuk of the bank	Subordinate to deposit holders, general creditors, holders of Tier 2 subordinated debt/bonds/sukuk of the bank	Subordinate to deposit holders, general creditors, holders of Tier 2 subordinated debt/bonds/sukuk of the bank	Subordinate to deposit holders, general creditors, holders of Tier 2 subordinated debt/bonds/sukuk of the bank
36	Non-compliant transitioned features	No	No	No	No	No
37	If yes, specify non-compliant features	NA	NA	NA	NA	NA

BASEL II PILLAR III AND BASEL III Disclosures

31 December 2024

12. Basel III LIQUIDITY DISCLOSURES

LIQUIDITY COVERAGE RATIO (LCR)

Common Disclosure Template

The below liquidity disclosure is prepared in accordance with the requirements of the CBO Circular BM 1127 'Basel III – Framework on Liquidity Coverage Ratio (LCR) and LCR disclosure standard' issued on 24 December 2014. The disclosure is based on average of three-monthly data points.

(RO '000)

		Total Unweighted Value (average)	Total Weighted Value (average)
High Quality Liquid Assets			
1	Total High-Quality Liquid Assets (HQLA)	365,343	365,343
Cash Outflows			
2	Retail deposits and deposits from small business customers, of which:	1,225,980	61,035
3	Stable deposits	27,489	825
4	Less stable deposits	1,198,491	60,210
5	Unsecured wholesale funding, of which:	981,569	556,437
6	Operational deposits (all counterparties) and deposits in networks of cooperative banks	6,372	1,593
7	Non-operational deposits (all counterparties)	662,316	241,962
8	Unsecured debt	312,882	312,882
9	Secured wholesale funding	-	-
10	Additional requirements, of which		
11	Outflows related to derivative exposures and other collateral requirements	104,732	104,732
12	Outflows related to loss of funding on debt products	-	-
13	Credit and liquidity facilities	16,943	1,694
14	Other contractual funding obligations		
15	Other contingent funding obligations	39,665	1,983
16	TOTAL CASH OUTFLOWS	2,368,890	725,882
Cash Inflows			
17	Secured lending (e.g. reverse repos)		
18	Inflows from fully performing exposures	510,058	379,798
19	Other cash inflows	203,889	104,732
20	TOTAL CASH INFLOWS	713,947	484,531
21	TOTAL HQLA		365,343
22	TOTAL NET CASH OUTFLOWS		241,351
23	LIQUIDITY COVERAGE RATIO (%)		151.37%

BASEL II PILLAR III AND BASEL III Disclosures

31 December 2024

12. Basel III LIQUIDITY DISCLOSURES (continued)

NET STABLE FUNDING RATIO (NSFR)

Common Disclosure Template

The below Net Stable Funding Ratio (NSFR) disclosure is prepared in accordance with the requirements of the CBO letter vide circular reference 1147 issued on October 26, 2016.

NSFR disclosure is presented below based on positions as on 31 December 2024.

Bank has maintained NSFR levels of 101%-110% during the year.

Sr No.	Particulars	No Maturity	<6 Months	6 Months to < 1 Year	>=1 Year	Weighted Value
ASF ITEM						
1	Capital	521,408	-	-	-	521,408
2	Regulatory Capital	521,408	-	-	-	521,408
3	Other Capital Instruments	-	-	-	-	-
4	Retail Deposits and Deposits from small Business Customers	663,258	306,313	207,831	113,767	1,181,878
5	Stable Deposit	163,381	2,915	2,688	2,076	162,610
6	Less Stable Deposit	499,877	303,398	205,143	111,692	1,019,268
7	Wholesale Funding	676,108	330,122	185,598	260,105	856,020
8	Operational	5,463	-	-	-	2,732
9	Other Wholesale Funding	670,645	330,122	185,598	260,105	853,288
10	Liabilities with matching interdependent Assets					
11	Other Liabilities	-	-	-	-	-
12	NSFR Derivative Liability	-	-	-	-	-
13	All other liabilities and equities not included in above categories	479,660	-	-	-	-
14	Total ASF	-				2,559,306
RSF ITEM						
15	Total NSFR high-quality liquid assets (HQLA)	-				11,468
16	Deposits held at other financial institutions for operational purposes	13,330	-	-	-	6,665
17	Performing Loans and Securities	-				
18	Performing loans to financial institutions secured by Level 1 HQLA	-	-	-	-	-
19	Performing loans to financial institutions secured by non-Level 1 HQLA and unsecured performing loans to financial institutions	-	284,719	7,902	-	46,659
20	Performing loans to non-financial corporate clients, loans to retail and small business customers, and loans to sovereigns, central banks and PSEs, of which	-	-	-	1,752,789	1,489,871

BASEL II PILLAR III AND BASEL III Disclosures

31 December 2024

12. Basel III LIQUIDITY DISCLOSURES (continued)

Sr No.	Particulars	No Maturity	<6 Months	6 Months to < 1 Year	>=1 Year	Weighted Value
21	With a risk weight of less than or equal to 35% under the Basel II Standardised approach for credit risk	76,885	490,773	79,019	-	323,338
22	Performing residential mortgages, of which:	-	-	-	-	-
23	With a risk weight of less than or equal to 35% under the Basel II Standardised Approach for credit risk	-	-	-	279,840	181,896
24	Securities that are not in default and do not qualify as HQLA, including exchange-traded equities	-	-	-	114,868	97,638
25	Assets with matching interdependent liabilities					
26	Other Assets:					
27	Physical traded commodities, including gold	-	-	-	-	-
28	Assets posted as initial margin for derivative contracts and contributions to default funds of CCPs	-	-	-	-	-
29	NSFR derivative assets	-	1,480	32	-	1,512
30	NSFR derivative liabilities before deduction of variation margin posted	-	-	-	-	-
31	All other assets not included in the above categories	-	-	-	152,564	152,564
32	Off-balance sheet items	-	133,991	36,810	83,941	12,737
33	Total RSF	-	-	-	-	2,324,347
34	NET STABLE FUNDING RATIO	-	-	-	-	110.11%

LEVERAGE RATIO (LR)

Common Disclosure Template

The below Leverage Ratio disclosure is prepared in accordance with the requirements of the CBO letter BSD/2017/BKUP/Leverage/564 – Implementation of Basel III Leverage Ratio issued on 27 August 2017.

(All amounts in OMR'000)

Table 1: Summary comparison of accounting assets vs leverage ratio exposure measure			
	Item	Current Quarter	Previous Quarter
1	Total consolidated assets as per published financial statements	3,755,956	3,468,369
2	Adjustments for derivative financial instruments	3,772	2,879
3	Adjustment for securities financing transactions (i.e., repos and similar secured lending)	-	-
4	Adjustment for off-balance sheet items (i.e., conversion to credit equivalent amounts of off-balance sheet exposures)	98,451	94,619
5	Other adjustments	-	-
6	Leverage ratio exposure	3,858,179	3,565,867

BASEL II PILLAR III AND BASEL III Disclosures

31 December 2024

12. Basel III LIQUIDITY DISCLOSURES (continued)

Table 2: Leverage ratio common disclosure template			
	Item	Current Quarter	Previous Quarter
1	On-balance sheet items (excluding derivatives and SFTs, but including collateral)	3,755,956	3,468,369
3	Total on-balance sheet exposures (excluding derivatives and SFTs) (sum of lines 1 and 2)	3,755,956	3,468,369
	Derivative Exposures		
4	Replacement cost associated with all derivatives transactions (i.e., net of eligible cash variation margin)	2,762	778
5	Add-on amounts for PFE associated with all derivatives transactions	1,010	2,101
11	Total derivative exposures (sum of lines 4 to 10)	3,772	2,879
	Securities financing transaction exposures		
12	Gross SFT assets (with no recognition of netting), after adjusting for sale accounting transactions	-	-
14	CCR exposure for SFT assets	-	-
16	Total securities financing transaction exposures (sum of lines 12 to 15)	-	-
	Other Off-balance sheet exposures		
17	Off-balance sheet exposure at gross notional amount	189,820	177,395
18	(Adjustments for conversion to credit equivalent amounts)	(89,344)	(82,776)
19	Off-balance sheet items (sum of lines 17 and 18)	100,476	94,619
	Capital and total exposures		
20	Tier 1 capital	513,456	511,946
21	Total exposures (sum of lines 3, 11, 16 and 19)	3,858,179	3,565,867
	Leverage Ratio		
22	Basel III leverage ratio (%)	13.31%	14.36%

The financial statements and other related disclosures are also available on the Bank's website, to view it on the website refer the link <https://ahlibank.om/investor-relations/financial-highlights/annual-reports/>.

The Basel II, Pillar III report is prepared in accordance with the requirements of Basel II, Pillar III disclosures as set out in the CBO circulars BM1009 and BM1027.

Basel III capital and liquidity disclosures are prepared in accordance with CBO Circular BM 1114 'Regulatory Capital and Composition of Capital Disclosure Requirements under Basel III' issued on 17 November 2013, CBO circular dated March 20, 2018 and BM 1127 'Basel III – Framework on Liquidity Coverage Ratio (LCR) and LCR disclosure standard' issued on 24 December 2014, respectively. The NSFR disclosure has been prepared in accordance to CBO Circular reference BM 1147 dated 26 October 2016. The Bank's disclosure on leverage was prepared as per CBO circular on leverage ratio, issued on 27 August 2017 and CBO circular No. BM 1157 on Implementation of Basel III Leverage Ratio Standard dated 30 December 2018.

For ahlibank SAOG



Hamdan Ali Nasser Al Hinaï

Chairman

Date: 29 January 2025